

Wageningen University and Research Centre

Michael Schaepman

ADAGUC Workshop
4/5 December 2008



WAGENINGEN UNIVERSITY
WAGENINGEN UR



Conclusions

- Atmospheric data access for the geo-spatial user community is an emerging topic!
- Trends indicate a general increase of atmospheric data use, in particular in the non-classical domains
- Policy and technology seem to offer plenty of opportunities for enhanced access and use
- Scientific and operational integration represent most of the challenge



Wageningen UR

■ Research

- Unique chain of knowledge
- From academic to applied
- Top 3: Plant & Animal Science, Agricultural Science, Ecology and Environment (ESI)
- Top 100 universities (IHES)



Wageningen UR

■ Research

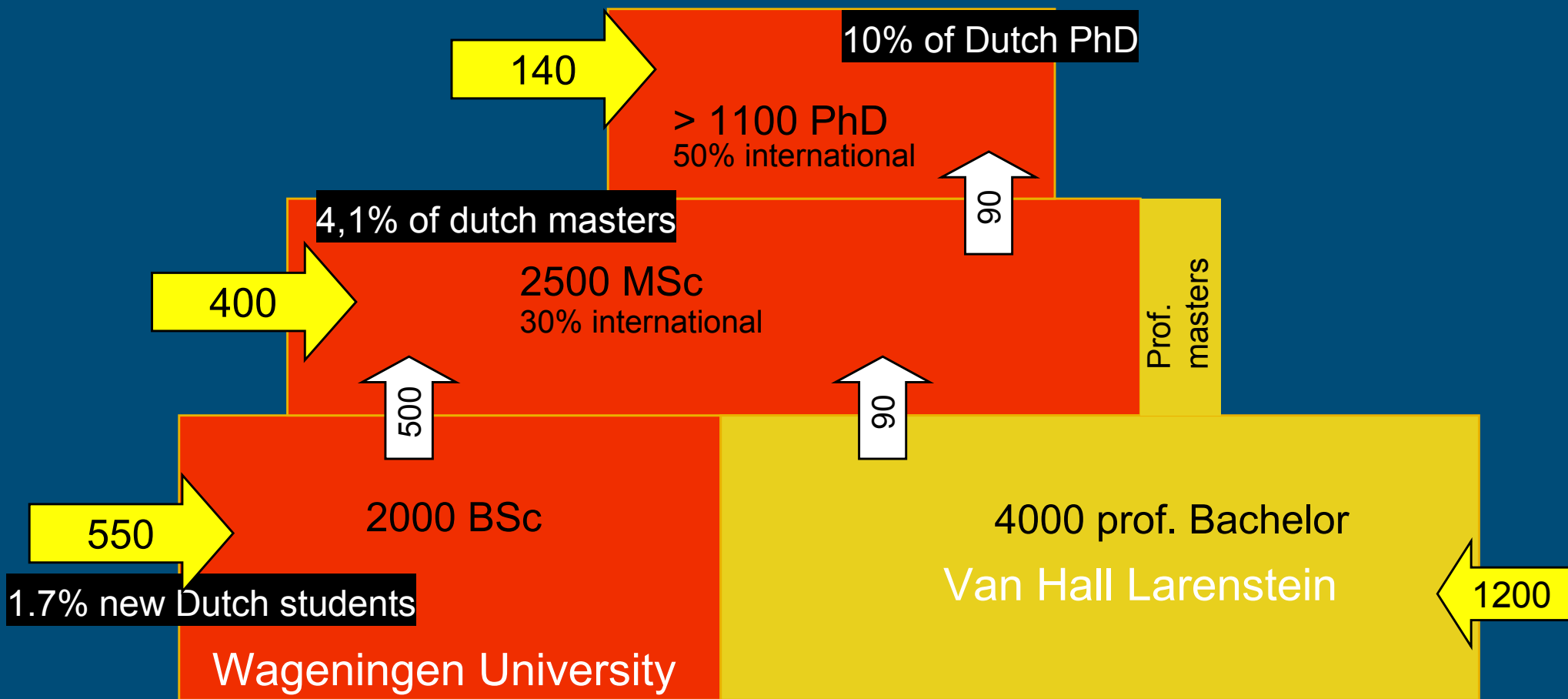
- Unique chain of knowledge
- From university to applied
- Top 3 in our domains
- Top 100 universities

■ Education

- Prof. Bach., BSC, MSc & PhD
- Life long learning
- 10.000 students



Wageningen Educational System



Wageningen UR

■ Research

- Unique chain of knowledge
- From university to applied
- Top 3 in our domains
- Top 100 universities

■ Education

- Prof. Bach., BSc, MSc & PhD
- Life long learning
- 10.000 students

■ 6000 faculty and staff

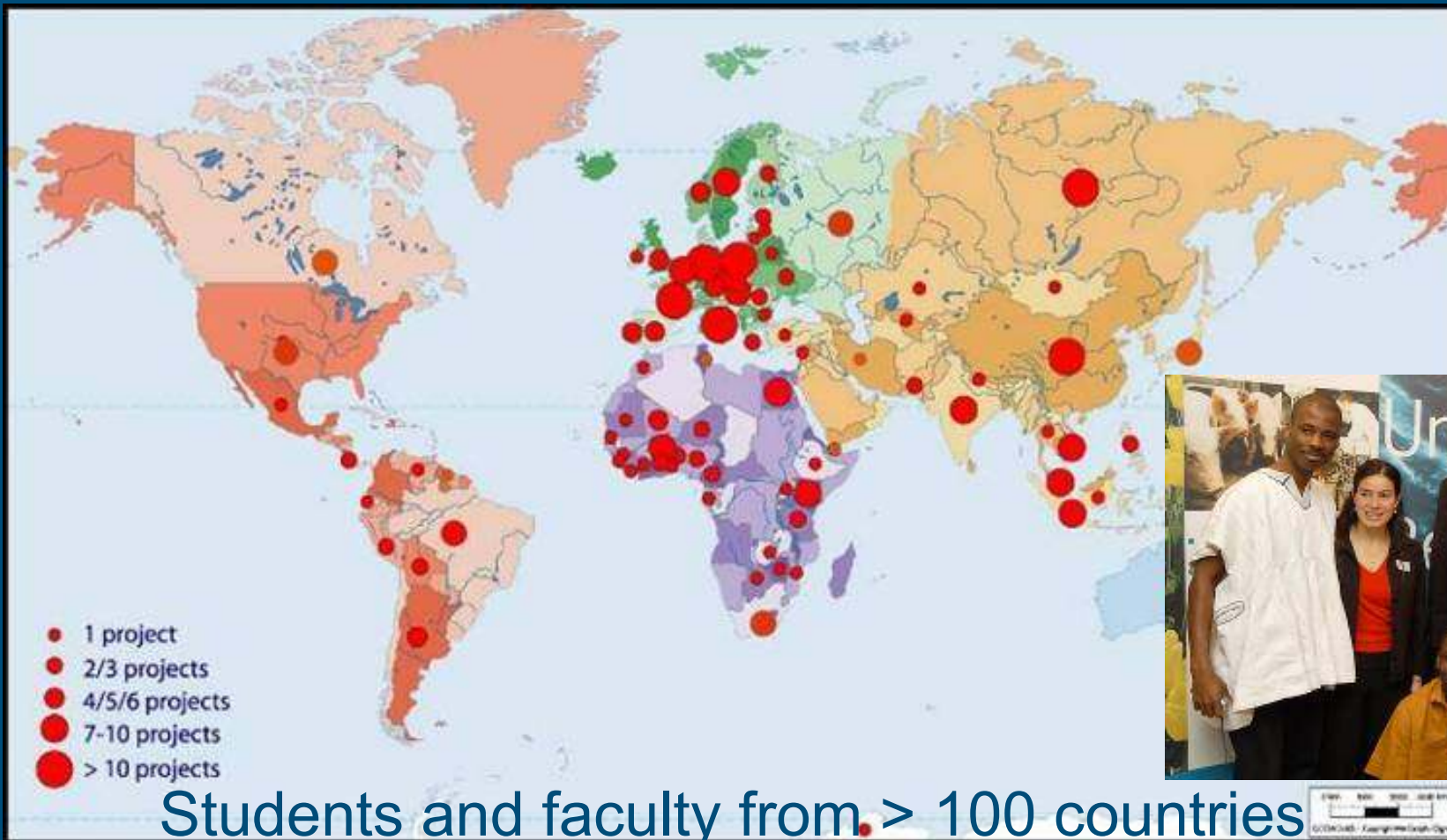
■ Largest Dutch research organization

■ Making science work (valorization)

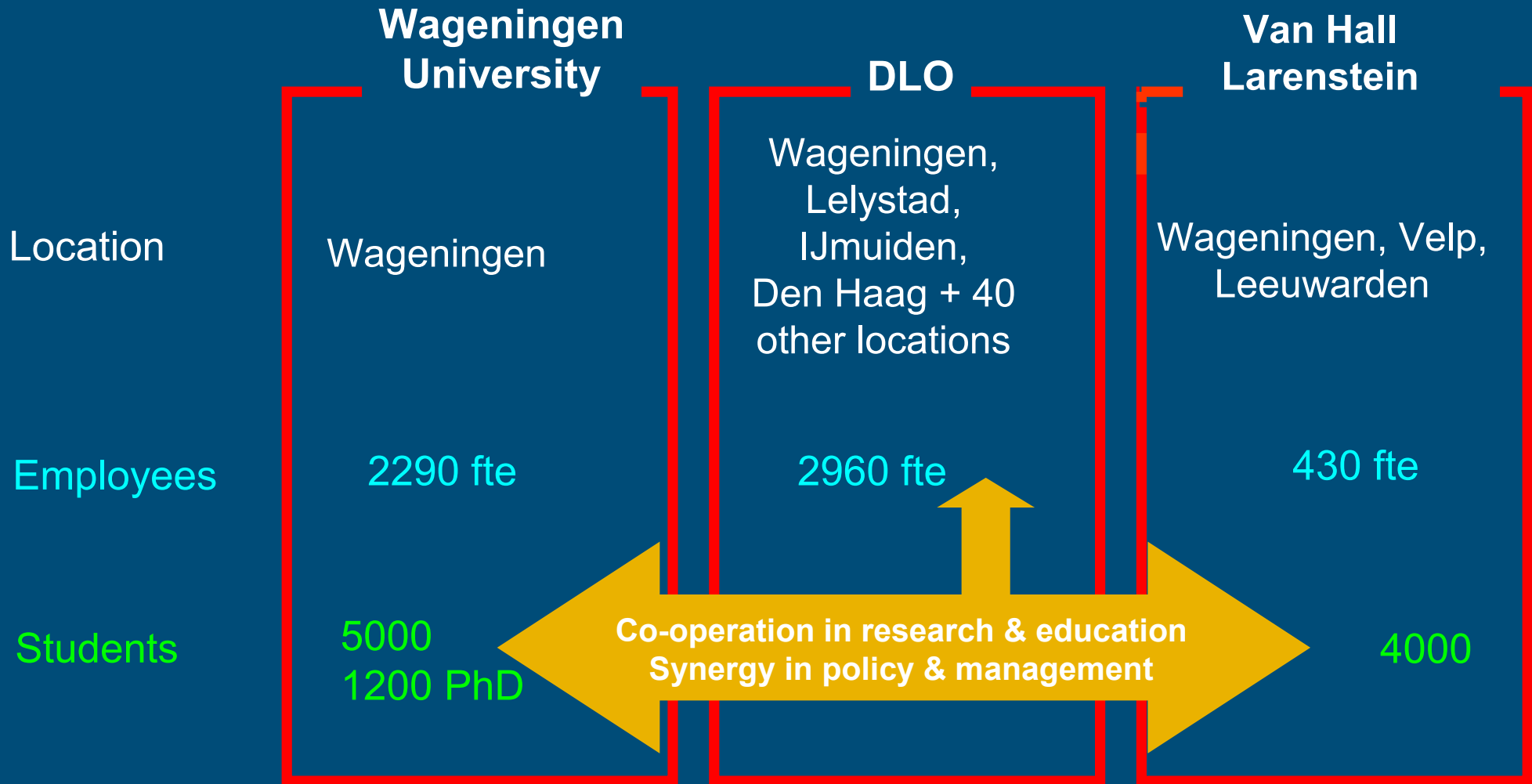
■ International orientation



International orientation



Partners in research and education



Source: annual report 2005



Organisation

Wageningen UR

Supervisory Board

Executive Board

Wageningen IMARES

WOT (RIKILT, CIDC a.o.)
Wageningen International
Wageningen Business School,
Wageningen Business Generator

Joint Management Structure

Plant Sciences Group	Animal Sciences Group	Agrotech. & food Sciences Group	Environmental Sciences Group	Social Sciences Group	VHL Prof. Education
----------------------	-----------------------	---------------------------------	------------------------------	-----------------------	---------------------

16 chairs	10 chairs	18 chairs	21 chairs Alterra	20 chairs	
-----------	-----------	-----------	----------------------	-----------	--

Joint Strategy

PPO-applied research	Applied research				
----------------------	------------------	--	--	--	--



Environmental Science Group

University

Alterra



Fundamental

Strategic



Healthy Food and Living Environment

Health
Lifestyle
Livelihood

Behaviour and perception
Food security
Institutions
Consumer
Citizen

Environmental
Sciences

Food
& Food Production

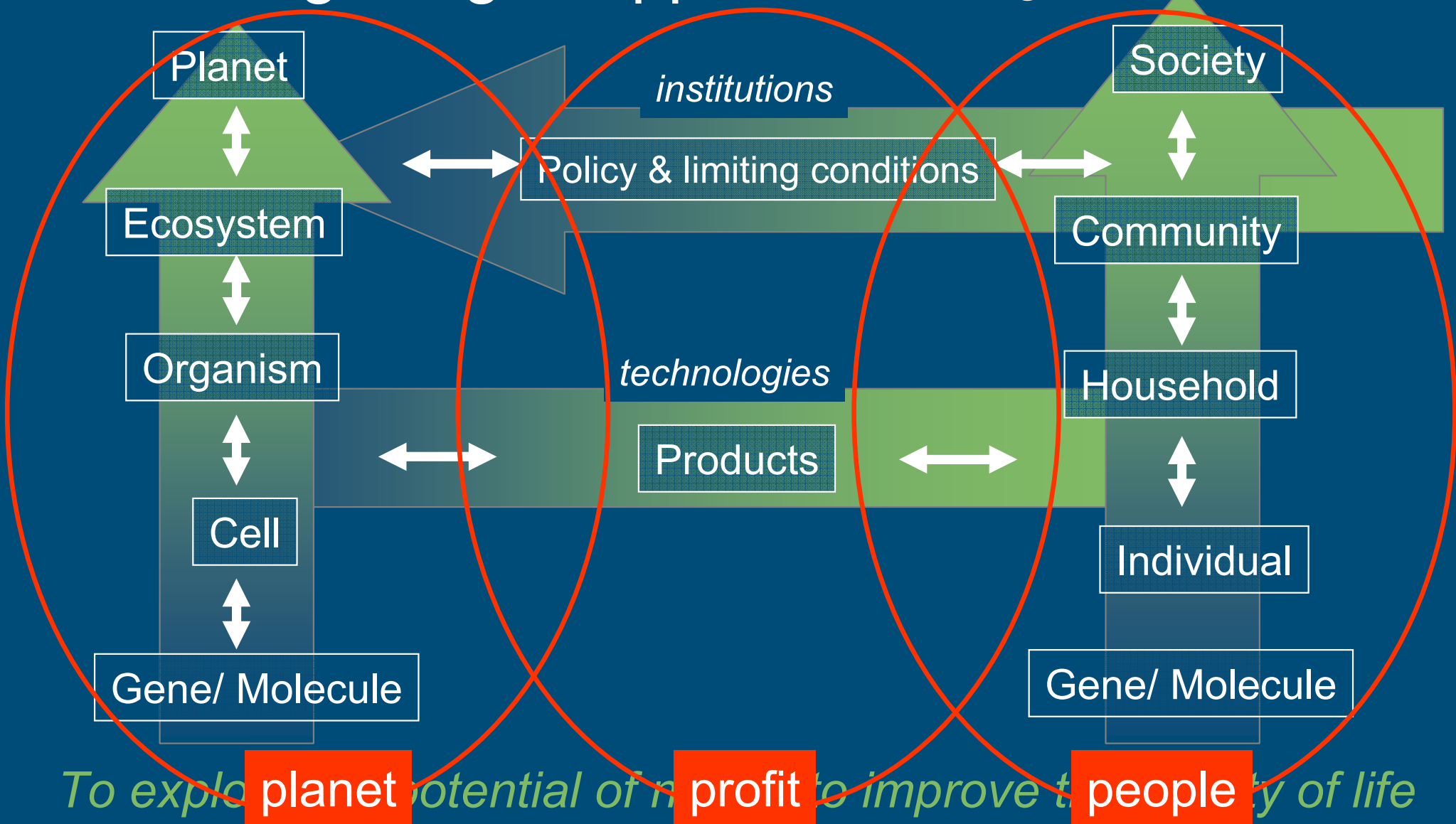
Living
Environment



World Hunger
Campaign
October 2010



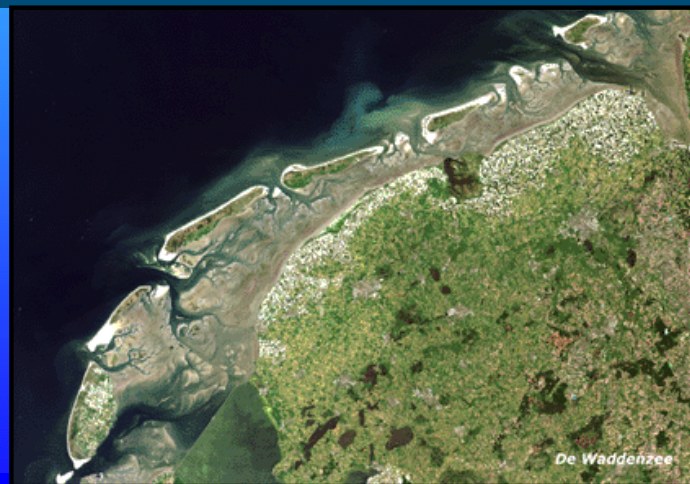
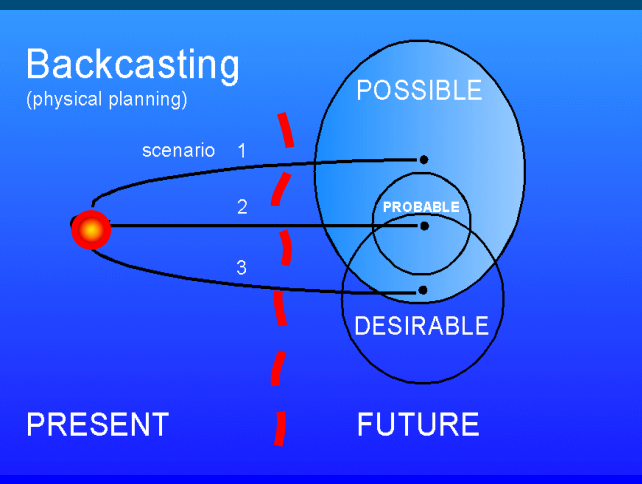
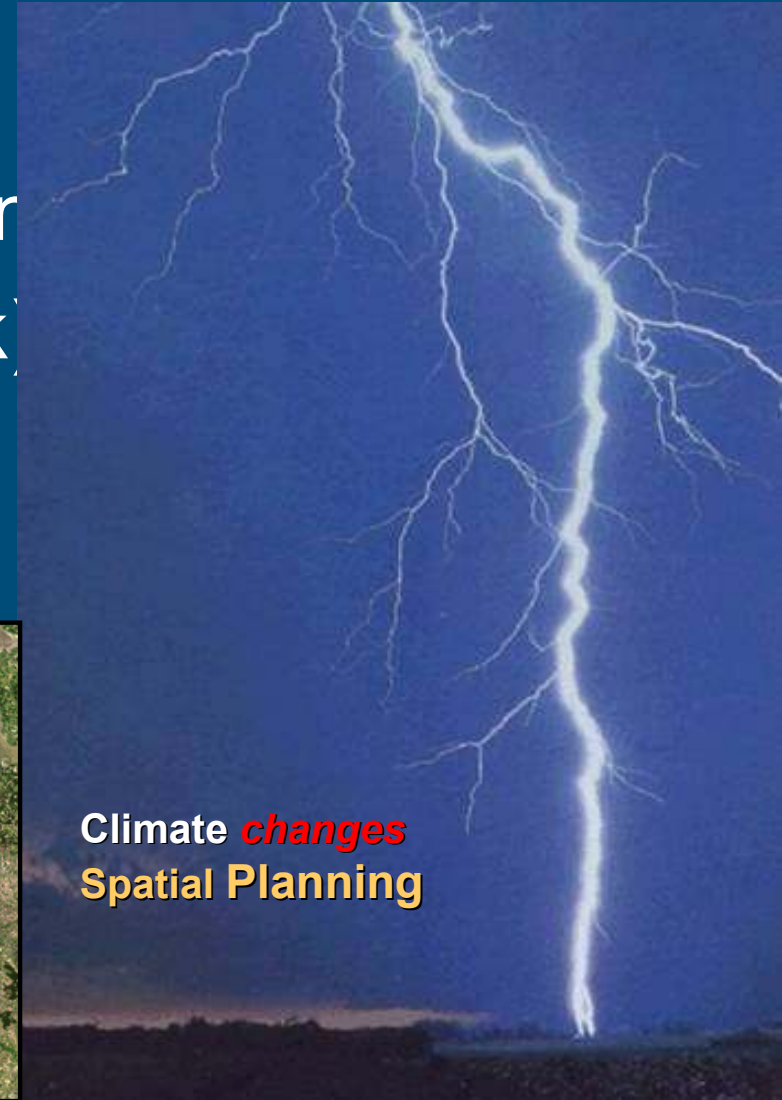
The Wageningen approach: biological and social



Large Initiatives in the Environmental Sciences

Group

- Knowledge for Climate (FES)
- Climate changes spatial planning
- Space for geo-information (Bsik)
- Several EU-initiatives



ADAGUC Special Issue - IEEE

■ IEEE J-STARS

- The 'IEEE Journal of Selected Topics in Applied Earth Observations and Remote Sensing' (JSTARS) is a new quarterly publication jointly sponsored by the Geoscience and Remote Sensing Society (GRSS) and the IEEE Committee on Earth Observations (ICEO). The new Journal reflects the growing interest in application themes in the annual IEEE conferences as well as the increasing involvement of GRSS in the ICEO.



ADAGUC Special Issue - Topics

- Heterogeneous data access and use for geospatial user communities
 - Application of (hydro)meteorological and climatological data in Earth sciences
 - Application of geo-data in (hydro)meteorology and climatology.
 - Application of operational systems using remotely sensed data
 - Spatial data infrastructures
 - Geospatial web services
 - Catalog services for the scientific community
 - Data portals and services
 - GIS-enabled virtual globe tools (e.g., Arc-GIS, Google Earth, Microsoft Windows Live Virtual Earth, NASA World Wind)
 - Interoperability and automated Mapping
 - International standards for data interoperability
 - Data and metadata models & mark-up languages
 - Discovery, evaluation and use of metadata
 - Exchange of meteorological and climatological data in the framework of INSPIRE.



ADAGUC Special Issue

- Special issue partially co-sponsored by KNMI, VU, WUR, and RGI
- Double (blind) peer review articles
- Indicate your interest to Raymond.Sluite@knmi.nl
- Send your manuscript soon or no later than February 28, 2009 for inclusion into the special issue to <http://mc.manuscriptcentral.com/jstars>
- It is planned to publish the special issue in September 2009



Thank you for your attention!

© Wageningen UR



WAGENINGEN UNIVERSITY
WAGENINGEN UR

