



# ADAGUC Workshop

KNMI organizes a 3-day workshop to get hands-on experience with the ADAGUC software suite, consisting of an OGC WMS/WCS service for NetCDF data and a viewer application with embeddable component for viewing WMS services.

## Monday June 17<sup>th</sup>

*Overview of ADAGUC and installation of the ADAGUC Viewer*

- 10:30 Opening of the workshop
- 11:00 Tour de table – participants
- 11:30 Overview and demonstration of ADAGUC features
- 12:00 Lunch
- 13:00 OpenEarth and Matroos – a presentation by Deltares
- 13:30 Explore functionalities of ADAGUC
- 14:00 Installation of the ADAGUC Viewer
  - Getting the viewer software from the ADAGUC repository
  - Configuration of the viewer
- 17:30 End of day one

## Tuesday June 18<sup>th</sup>

*Installation of the ADAGUC server; use your own data*

- 9:00 Installation of the ADAGUC Server
  - Installation from ADAGUC repository
  - Creating a database
- 12:00 Lunch
- 13:00 Get your own data working with ADAGUC
- 17:30 End of day two

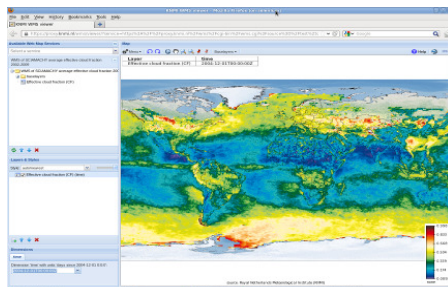
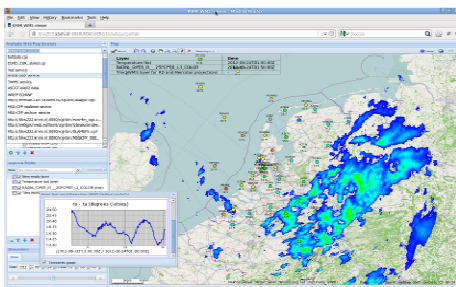
## Wednesday June 19<sup>th</sup>

*Visualization of remote OpenDAP data and retrieving custom data*

- 9:00 What is OpenDAP?
- 10:00 Visualizing remote OPeNDAP servers (Unidata, OpenEarth)
- 12:00 Lunch
- 13:00 Using GetFeatureInfo for getting data for a location over a time period
  - Multilevel and multimember data
  - JSON or XML output
- 14:00 Custom styling and configuration of layers
  - contourlines, shading
- 16:00 Roadmap and future work
- 17:00 End of workshop

The software runs on recent Linux systems; a Linux VirtualBox machine image can be provided for Mac or Windows users.

*We hope to see you!* - Maarten Plieger and Ernst de Vreede



*When: 17 - 19 June 2013*

*Who: Developers and data managers with developer skills*

*Where: KNMI,  
 Wilhelminalaan 10, de Bilt.  
 route: [www.knmi.nl/contact](http://www.knmi.nl/contact)*

*Info & Sign-up:  
[maarten.plieger@knmi.nl](mailto:maarten.plieger@knmi.nl)  
[ernst.de.vreede@knmi.nl](mailto:ernst.de.vreede@knmi.nl)*

*Skills required: Basic linux command-line, HTML, Javascript, PHP; and Python for manipulating your own data into NetCDF.*

**Bring your own data and laptop!**

## What is ADAGUC?

*ADAGUC is a geographical information system to visualize netCDF files via the web. The software consists of a server side C++ application and a client side JavaScript application.*

*ADAGUC provides several features to access and visualize data over the web.*

*ADAGUC makes use of OGC standards for data dissemination.*

*<http://adaguc.knmi.nl>  
<http://msgcpp.knmi.nl>*

